

Ankle Joints/Stirrups/Kits

- Becker Orthopedic 62-65
- Fillauer..... 68-69
- OTS, Inc 74-75

Motion Control Limiters

- Becker Orthopedic 66

Plantar Flexion Stop

- Becker Orthopedic 66

Quick Disconnect

- Becker Orthopedic 66

XAFO Kit

- Becker Orthopedic 67

Compcore Panels and Ankle Forms

- Becker Orthopedic 67

Polyurethane Rod

- Becker Orthopedic 67

TC Ankle Stop

- Creative Adaptations..... 68

Spring Wire Dorsiflexion Assist Orthosis Kit

- Fillauer..... 68

Thermo Formable Composite (TFC)

- Fillauer..... 69

PolyCar-C Inserts and Composite Sheets

- Fillauer..... 70

Flexor Dorsal Flexion Assist

- Gaffney Technology™ 71

Ankle Hinge Kits

- Gaffney Technology™ 71-73

Posterior Spring Assist and Adjustable Stops

- Precision O&P..... 76

Dorsi-Assist and Stops

- Precision O&P..... 76

Becker Orthopedic - Gillette Double Flexure Ankle Joint

- Provides a full range of options for joint motion and control in thermoplastic orthoses
- Retains varus/valgus rigidity for proper maintenance of alignment
- A softer ankle joint for applications that require maximum functional stretch
- Joints do not need to be perfectly square



Size	Dimensions	Product No.
Infant	3/8" x 1 1/8"	775-I
Pediatric	3/8" x 1 3/8"	775-P
Child	7/16" x 1 15/16"	775-C
Adult	9/16" x 2 3/16"	775-A

Gillette Dorsiflexion Assist Ankle Joint System

- Provides ease of fabrication and cosmetic appeal
- Actual dorsiflexion assist varies with patient's foot length, neuromuscular characteristics and physique
- Silver, clear and gold adult provide 1, 2, and 3 lbs approximately of assistance for toe lift
- Colors may be interchanged to match patient requirements



Size	Dimensions	Product No.		
		Clear	Gold	Silver
Child	7/16" x 1 3/4"	776-CC	776-CG	776-CS
Adult	9/16" x 2 1/16"	776-AC	776-AG	776-AS

Gillette Ankle - Replacement Parts			
Size	Bushings	Product No.	
		Screw	Posterior Stop
Pediatric/Infant	—	—	*775-PS-PI
Child	775-C1	775-C2	*775-PS-C
Adult	775-A1	775-A2	*775-PS-A

*Sold 10 per pack

"Scotty" Free Motion Ankle Joint

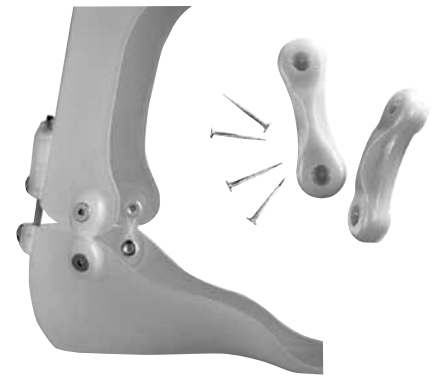
- Easily fabricated
- Recommended for use with motion control devices
- The Scotty Econoline (781) is an annealed steel, free motion joint

Size	Dimensions	Product No.	
		Econoline	Stainless Steel
Small	1/2" x 2 1/2"	781-S	780-S
Large	1/2" x 3"	781-L	780-L



Tamarack Flexure Joint®

- A self-aligning flexure joint technology that self-co-aligns the medial and lateral joint axes
- Unique high strength inner core prevents elongation and ensures precise hinging action
- Provides the strength and precision required for virtually all ankle joint applications
- Manufactured from durable urethane



Thermoplastic
Orthotics

Size	Dimensions	Dummies	Product No.	
			Flexure Joint	Black
Pediatric	.41" x 1.25"	741-P	740-P	740-P-BLK
Medium	.51" x 1.51"	741-M	740-M	740-M-BLK
Large	.59" x 1.77"	741-L	740-L	740-L-BLK
Accessories				
Cosmetic Shearban® Patch*			749-740	
*Comes in packs of 12				

Tamarack Variable Assist™

- Compact mounting hardware allows continuously variable adjustment of the dorsiflexion-assist moment
- Design allows practitioner to adjust the assist moments of joints to any value from zero to nearly three times what is possible with standard installation



Size	Dimensions	Product No.
Pediatric	.72" x 1.7"	743-P
Large	1" x 2.4"	743-L

Tamarack Clevisphere™ Ankle Joint

- Free-motion joint features a spherical hinge that provides automatic co-alignment of the medial and lateral joint axes
- Easy, fast fabrication saves time
- Features an adjustable stop
- Dimensions: .82" x 3.2"

Product No. **747-L**



Tamarack Dorsiflexion Assist Flexure Joint®

- Biased design provides motion assist similar to traditional metal dorsi-assist ankle joints
- Provides motion assist for elbow, wrist, pediatric knee orthoses and the full range of AFO's
- Unique inner core to extend joint life and minimize joint elongation
- Black available for medium and large only, add BLK when ordering



Size	Dimensions	Product No.		
		75 Durometer	85 Durometer	95 Durometer
Pediatric	.41 x 1.25"	742-P-75	742-P-85	742-P-95
Medium	.51 x 1.51"	742-M-75	742-M-85	742-M-95
Large	.59 x 1.77"	742-L-75	742-L-85	742-L-95

Tamarack® Flexure Joint Caps™

- An external mounting option designed to produce an intimate fit with Tamarack Flexure Joints
- Eliminates the need to fabricate a new brace when articulation is desired
- Create cavities for mounting joints to carbon fiber AFOs
- Works well with a variety of bracing materials, such as thermoplastic, copoly, carbon fiber, metal and leather systems



Size	Product No.	
	Black	Natural
Medium	741-CAP-MB	741-CAP-MN
Large	741-CAP-LB	741-CAP-LN

Replacement Parts - Tamarack Joints	
Replacement Parts	Product No.
Standard Screws (7 mm) for Pediatric	740-1P-7
Standard Screws (9 mm) for Large/Medium	740-1LM-9
Longer Screws (12 mm) for Large/Medium	740-1LM-12
Tamarack Bushings, Large/Medium	740-2-L
Tamarack Bushings, Pediatric	740-2-P

Tamarack® Spanner Wrench

- Has a spring loaded retractable center pin, which helps hold and align the flange nut for easier installation of the dorsiflexion assist joints
- Spanner pin matches up with four notches in the flange nut
- This also makes for easier removal of the joints in the presence or 740 or 742 style joints



Size	Product No.
Pediatric	T-740-3P
Large/Medium	T-740-3LM

Camber Axis Hinge® Kit

- Provides anatomical alignment due to the center offset
- Range of motion or fixed ankle position can be set by inserting the color coded keys included
- All keys can be interchanged or reversed from solid ankle to limited motion of plantar or dorsiflexion
- Eliminates the need for posterior motion controls

Size	Dimensions	Stainless Steel	Black
Small	3 ¹ / ₈ " x 1 ¹ / ₈ "	750-S	750-Black-S
Medium	3 ³ / ₄ " x 1 ¹ / ₂ "	750-M	750-Black-M
Large	4 ¹ / ₂ " x 1 ⁹ / ₁₆ "	750-L	750-Black-L



Thermoplastic
Orthotics

Camber Axis Technic™

- Durable free motion ankle joint that is based on the proven technology of the Camber Axis Hinge®
- One size for youth and adults

Color	Product No.
Silver	751
Black	751-B



Camber Axis Technic

Oklahoma Ankle Joint

- Can be preheated, shaped, attached to the cast, prior to vacuum forming
- Incorporates a unique design of ridges and grooves to lock the joint in place when vacuum formed
- Comes with pre-drilled holes to facilitate alignment and a plastic bushing to reduce wear

Size	Dimensions	Standard (Polypro)	Heavy Duty (Nylon)
Pediatric	1 ⁵ / ₁₆ " x 2"	760-P	765-P
Small	1" x 2 ⁵ / ₈ "	760-S	765-S
Medium	1 ¹ / ₄ " x 3 ¹ / ₄ "	760-M	765-M
Large	1 ¹ / ₂ " x 3 ³ / ₄ "	760-L	765-L
X-Large	1 ³ / ₄ " x 4"	760-XL	765-XL

Replacement Parts - Oklahoma Joints	
Replacement Parts	Product No.
Attachment Screw for Pediatric and Small	761-1
Attachment Screw for Medium, Large and X-Large	761-3
Threaded Insert for Pediatric and Small	761-2
Threaded Insert for Medium, Large, and X-Large	761-4
Pivot Bushing & Screw - All Sizes	761-5
Nylon Bushings - All Sizes	761-6
Adh. Foam Pad (Replace ? with P, S, M, L, or XL)	761-7?
Pelite Pad (Replace ? with P, S, M, L, or XL)	761-8?



Oklahoma Ankle Joint

Motion Control Limiter

- Plantar/dorsiflexion range-of-motion device, easily fabricated into thermoplastic orthoses
- Provides adjustable plantar flexion stop as well as four dorsiflexion stop positions
- Ankle may also be fixed at any of these four settings

Size	Product No.
Small	655-MCL-S
Large	655-MCL-L
X-Large	655-MCL-XL



Motion Control Limiter Kit

- Adjustable plantar flexion range-of-motion limiter that can be transformed to a solid ankle AFO
- Varying degrees of plantar flexion are obtained by grinding the stop
- One size; complete kit, including fabrication instructions

Description	Product No
Motion Control Limiter Kit	755-MCL
Components	
Molded Urethane Bumper	AV-755-001
Disposable Channel Plug	AV-755-002



Plantar Flexion Stop

- Stainless steel and durable urethane
- Provides a variable plantar flexion control which can be locked into any position
- Easy to fabricate into any thermoplastic orthosis
- One size; complete kit including fabrication instructions

Description	Product No
Plantar Flexion Stop Kit	795
Components	
Bumper and Screw only	795-B



Quick Disconnect™

- Made of nylon, or aluminum for heavy duty applications
- By incorporating the Quick Disconnect in cervical, spinal, lower and upper limb orthotics, "modularity" can be built into any device
- One size fits (4⁷/₈" x 3³/₄")

Description	Product No.
Nylon	980
Aluminum	980-HD



XAFO Kit

- Provides M-L control of the foot ankle complex
- Low profile design utilizes stainless steel Camber Axis Hinges® for added strength and variable motion control

Includes:

- Camber Axis Hinges
- Prefabricated thermoplastic medial and lateral uprights
- Interface padding, proximal and distal straps
- Sheet plastic and lining material for custom foot fabrication

Indications: Clinical conditions, including: Severe pes planus; Degenerative ankle joint disease; Chronic ankle instabilities

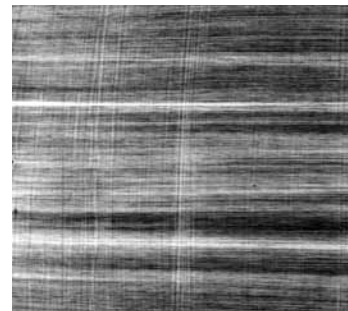
Product No. **396**



Thermoplastic
Orthotics

Compcore® Panels

- Carbon reinforcement that laminates to polypropylene
- Provides approximately 50% increase in rigidity to the host plastic
- Available in various sized panels to facilitate varying needs in fabrication

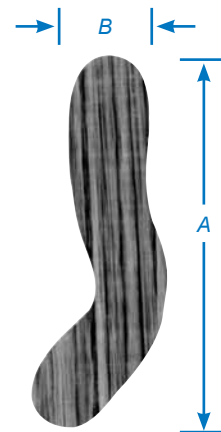


Size	Product No.
0.06" x 12" x 12"	MCC-412
0.09" x 12" x 12"	MCC-415

Compcore Ankleforms®

- Pre-cut AFO reinforcements designed to reduce fabrication time
- Sold in pairs

Size	Dimensions (A x B)	Thickness	Product No.
Small	3 ⁵ / ₈ " x 3 ³ / ₄ "	0.06"	MCC-1000
Medium	4 ³ / ₄ " x 1"	0.06"	MCC-1010
Large	6" x 1 ¹ / ₄ "	0.06"	MCC-1020
Small	3 ⁵ / ₈ " x 3 ³ / ₄ "	0.09"	MCC-1001
Medium	4 ³ / ₄ " x 1"	0.09"	MCC-1011
Large	6" x 1 ¹ / ₄ "	0.09"	MCC-1021



Polyurethane Rod (not pictured)

- Sold per foot

Size	Product No.
3/16"	796-3
1/4"	796-4

Creative Adaptations - TC Ankle Stop

- Placed on the posterior side of a plaster mold before vacuum forming, this device will allow the patient to change the degree of plantar flexion stop on the finished AFO with adjustable noise limiting bumpers
- Adult TC Stop can also be made into a solid ankle with the solid insert



Size	Product No.
Pediatric	102TCP
Adult	101TCA
TC Stop Solid Insert	103TCSI

Fillauer - Spring Wire Dorsiflexion Assist Orthosis Kit

- Finished stainless steel custom fabricated brace
- Cuff is not included in kits
- Each size consists of an 18" spring wire and foot plate



Size	Wire Diameter	Heel Width	Product No.
Small	1/8"	2 5/8"	012000KT
Medium	5/32"	3"	012001KT
Large	5/32"	3 1/2"	012002KT

PDA Ankle Joint Kit

- Plantar/dorsiflexion assist
- Not recommended for patients weighing over 180 lbs
- Indicated for conditions requiring rigid ankle support and positioning
- Aluminum head; Stainless steel stirrup

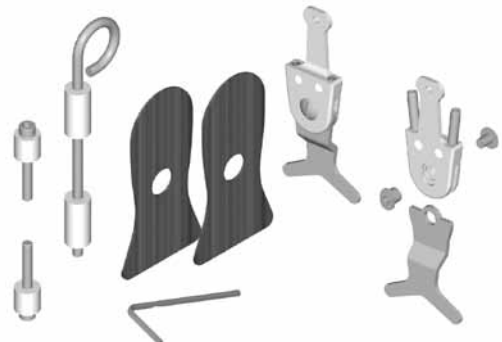
Product No. **020894**



PDC Ankle Joint Kit

- Plantar/dorsiflexion control
- Not recommended for patients weighing over 180 lbs
- Indicated for conditions requiring rigid ankle positioning
- Aluminum head; Stainless steel stirrup

Product No. **020840**



Dorsiflexion Assist Ankle Joint Kit

- Plantar/dorsiflexion assist
- Not recommended for patients weighing over 180 lbs
- Indicated for conditions requiring toe lift
- Aluminum head; Stainless steel stirrup

Product No. **020836**



Thermo Formable Composite (TFC)

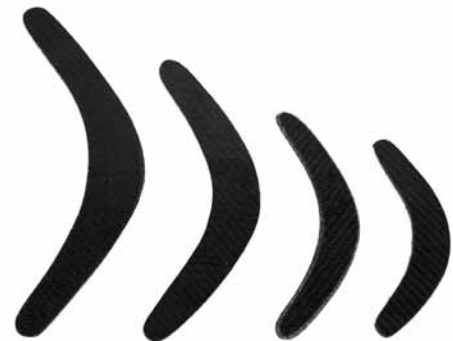
- Combines the strength of carbon composite with the molding properties of plastic
- Material properties allow for active performance and flexibility
- Flexible Insole: 1.5 mm, best for shaping around compound curves; for example, the heel
- Rigid Insole: 2.5 mm, best used as a rolling insole for diabetic patients; more difficult around the heel

Description	Size	Product No.	
		Flexible	Rigid
Insole	35-37 mm	700030121	700030141
Insole	38-40 mm	700030122	700030142
Insole	41-43 mm	700030123	700030143
Insole	44-46 mm	700030124	700030144
Arch Support Blank	up to 23 cm (SM)	700540	700500
Arch Support Blank	23-26 cm (MD)	700550	700520
Arch Support Blank	26-32 cm (LG)	700560	700530



TFC Ankle Inserts

Size	Length	Size	Product No.
Small	4 1/4"	0.060/1.5 mm	700100
Medium	5 1/4"	0.100/2.55 mm	700110
Large	6 1/4"	0.100/2.55 mm	700120
X-Large	6 1/4"	0.100/2.55 mm	700130



TFC Orthotic Uprights

- Accommodates smaller radii bends
- Increased stiffness and flexibility of carbon composite
- Uses innovative post pre-preg carbon material
- Optimized attachment plates for conventional metal joints

Description	Product No.
TFC Orthotic Upright	700600
19" Silicone Forming Sleeve	700610
Flat Plate for Double Action Ankle Joint	700620
Contouring Foam	700630

Requires a silicone forming sleeve (700610) and a Flat Plate (700620) when fabricating to ensure warranty



Thermoplastic
Orthotics

PolyCar-C™ Ankle Inserts

- Heating Temperature: 350°-400°F
- High performance reinforcing composite
- Easy to mold
- Thermobonds to polypropylene, copolymer and metal



Size	Product No.
Small Pair (0.060")	076630
Medium Pair (0.090")	076632
Large Pair (0.090")	076634
X-Large Pair (0.125")	076636

PolyCar-C Unidirectional Sheets

- Designed for stiffening or strengthening pelvic bands, prosthetic sockets, shoe soles, etc.



Size	Product No.
12" x 18" x 0.125"	076620
12" x 36" x 0.125"	076622

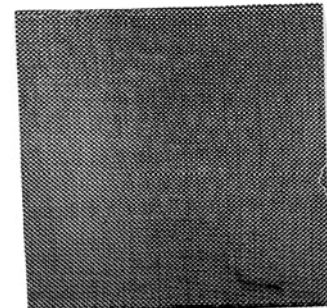
PolyCar-C Bidirectional Sheets

- Thermobonds to polypropylene, copolymer & metal

Size	Product No.
0.06", 12" x 12"	076608
0.06", 12" x 24"	076610
0.09", 12" x 12"	076612
0.09", 12" x 24"	076614
0.125", 12" x 12"	076616
0.125", 12" x 24"	076618

Carbon Composite Sheets

Description	Measurements	Product No.
2-ply	12" x 12"*	076083
2-ply	12" x 24"*	076117
3-ply	12" x 12"*	076091
3-ply	12" x 24"*	076133
5-ply	12" x 24"*	076135
Scotch mounts, package of 25 (for mounting inserts)		076109
*Includes 1/2 pack (076109) **Includes 1 pack (076109)		



Gaffney Technology - Flexor Dorsal Flexion Assist

Size	Product No.	
	Replacement Straps	Gaffney Flexors
80 Durometer		
Child	2010	2000
Adult	2012	2001
85 Durometer		
Child	2010-C	2000-C
Adult	2012-C	2001-C

Accessories		
Description	Unit of Measure	Product No.
Rubber Screw-in	25/bag	B-300
³ / ₁₆ " Polyurethane Cord	5 ft	B-350
¹ / ₄ " Polyurethane Cord	5 ft	B-400
⁵ / ₁₆ " Molded Urethane	10/bag	B-1000
³ / ₈ " Molded Urethane	10/bag	B-2000



Thermoplastic
Orthotics

Pediatric Ankle Hinge Kits

505 - Colt

- Width: ⁷/₁₆"; Length: 1¹/₂"
- Designed for the newborn to 1¹/₂ years
- Allows for the minimum amount of hinge necessary on your patient while still performing the function needed
- Made of 10 gauge stainless steel
- Include 2 hinges plus all necessary components, screws, bumpers and nails plus instructions

Product No. **505**



510 - Pony

- Width: ⁷/₁₆"; Length: 2"
- Designed for the small child to avoid the distal portion of hinge from interference with the control area and to help in shoe space problems
- Made of 10 gauge stainless steel
- Includes 2 hinges plus all necessary components, screws, bumpers and nails plus instructions

Product No. **510**



660 - Stallion

- Width: $\frac{7}{16}$ " ; Length: $2\frac{1}{2}$ "
- Designed for children up to small adults
- Made of 10 gauge stainless steel
- Includes 2 hinges plus all necessary components, screws, bumpers and nails plus instructions

Product No.

660



747 - Shetland

- Width: $\frac{9}{16}$ " ; Length: 3"
- Adjustable stop for use on children 80 lbs or less
- Ideal for heel cord lengthening post-operative
- Made of 10 gauge stainless steel
- Includes 2 hinges plus all necessary components, screws, bumpers and nails plus instructions

Product No.

747



Adult Ankle Hinge Kits

705 - Mustang

- Width: $\frac{9}{16}$ " ; Length: 2"
- Designed for adolescents and adults
- Short hinge with extra width for more wear surface
- Incorporates large pin and clip
- Made of 10 gauge stainless steel
- Includes 2 hinges plus all necessary components, screws, bumpers and nails plus instructions

Product No.

705



707 - Filly

- Width: $\frac{9}{16}$ " ; Length: $2\frac{1}{2}$ "
- Designed for teens and adults
- For use when a small distal portion is desired to avoid bone prominence or interference in control area
- Also helps in shoe fit
- Made of 10 gauge stainless steel
- Includes 2 hinges plus all necessary components, screws, bumpers and nails plus instructions

Product No.

707



710 - Bronco

- Width: 9/16"; Length: 3"
- Designed for use with teens and average size adults
- Has extra width and large pin
- Made of 10 gauge stainless steel
- Includes 2 hinges plus all necessary components, screws, bumpers and nails plus instructions

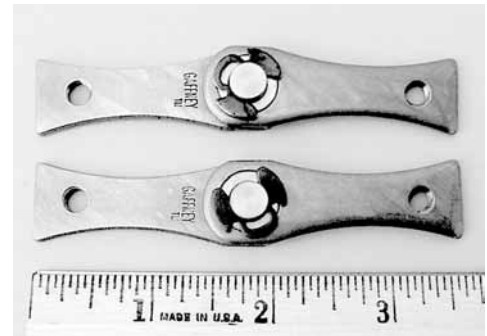
Product No. **710**



810 - Clydesdale

- Width 1 1/16"; Length: 3 1/2"
- Largest hinge, designed with your toughest patients in mind
- Longer length, width and larger pin
- Made of 10 gauge stainless steel
- Includes 2 hinges plus all necessary components, screws, bumpers and nails plus instructions

Product No. **810**



Alignment Tools

Adjustable Alignment Fixture

- Each set includes four adjustable tools and starter rod, with a solid polyurethane tool holder
- Designed to save time and assure proper alignment

Description	Product No.
For Children's Hinges	A-300
For Mustang, Filly, and Bronco	A-350
For Clydesdale	A-400

Hinge Repair Kits

- All repair kits include 2 pins, 2 washers and 2 clips

Description	Product No.
For Colt and Pony	PK-500
For Stallion and Shetland	PK-600
For Mustang, Filly and Bronco	PK-700
For Clydesdale	PK-800



OTS - Adjustable Range of Motion Ankle Joint

- Square bar slot for easy fabrication
- Features anterior and posterior adjustment
- Accepts double action stirrup head or solid stirrup
- Ability to initially lock ROM and then gradually increase it as patient progresses

Bar Slot Width	Dimensions	Product No.
Adjustable Range of Motion, Alloy		
1/2"	3/16" x 1/2"	IA12ARM-AL
5/8"	3/16" x 5/8" & 1/4" x 5/8"	IA16ARM-AL
3/4"	3/16" x 3/4" & 1/4" x 3/8"	IA19ARM-AL
Adjustable Range of Motion, Steel		
1/2"	3/16" x 1/2"	IA12ARM
5/8"	3/16" x 5/8" & 1/4" x 5/8"	IA16ARM
3/4"	3/16" x 3/4" & 1/4" x 3/8"	IA19ARM



Double Action Ankle Joint

- Square bar slot for easy fabrication
- Nickel plated for corrosion resistance
- Offers spring-loaded dorsi-assist complete with an infinitely adjustable dorsiflexion stop
- Accepts double action stirrup or solid stirrup

Bar Slot Width	Dimensions	Product No.
Double Action Square Slot, Alloy		
12	3/16" x 1/2"	IA12-AL
16	3/16" x 5/8" & 1/4" x 5/8"	IA16-AL
19	3/16" x 3/4" & 1/4" x 3/8"	IA19-AL
Double Action Square Slot, Steel		
12	3/16" x 1/2"	IA12
16	3/16" x 5/8" & 1/4" x 5/8"	IA16
19	3/16" x 3/4" & 1/4" x 3/8"	IA19



Integrated Ankle Joints

- Thermoformable for cosmetic reasons
- The power of a metal ankle yet unobtrusive
- Dorsiflexion and/or plantar flexion assist
- Nickel plated for corrosion resistance
- Includes all mounting hardware, stirrups and alignment fixture

Size	Product No.
Thermoformable Dorsi-Flexion Assist Ankle	
Child	IACHDF-AL
Youth	IAYTHDF-AL
Adult	IAADDF-AL
Thermoformable Double Action Ankle	
Child Small	IACHDA-AL
Youth Medium	IAYTHDA-AL
Adult Large	IAADDA-AL
Thermoformable Adjustable Range of Motion Ankle	
Small	IASMARM-AL
Large	IALGARM-AL



Dorsi-Flexion Assist



Double Action



Adjustable Range of Motion

Stirrups for Ankle Joints

Split Tail Stirrups

- Unique “Y” shape of the split tail is perfectly suited for use in plastic NYUCB shoe insert configurations
- Choose from double action or dorsiflexion

Size	Product No.	
	Double Action	Dorsiflexion
Child	IARCHDAST	IARCHDFST
Youth	IARYTHDAST	IARYTHDFST
Adult	IARADDAST	IARADDST

Double Action



Dorsiflexion



Wide Tongue Solid Stirrups

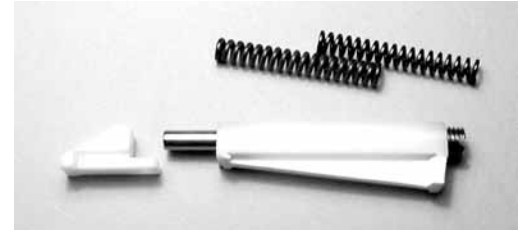
- Fits both double action and adjustable range-of-motion ankle joints

Size	Size	Product No.
Child	8"	STWTDA8-CH
Adult	8 ³ / ₄ "	STWTDA8.75
Adult	9 ¹ / ₂ "	STWTDA9.5
Adult	10 ¹ / ₄ "	STWTDA10.25
Adult	11"	STWTDA11



Precision O&P - Posterior Spring Assist with Adjustable Stop

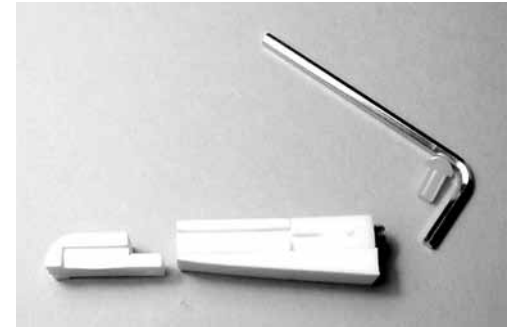
- Two adjustable components for use in plastic articulated orthoses
- Vacuum molded into plastic without use of fasteners
- Made of durable high tech plastics & metals
- Usable in single & double pull articulated orthoses



Size	Spring Assist	Springs Only	
		Soft	Heavy Duty
Pediatric	PSA-100-P	PSA-P-SP	PSA-P-SPHD
Adult	PSA-100-AXL	PSA-100-ASP	PSA-100-ASPHD
Adult X-Large	PSA-100-A	PSA-100-SP	PSA-100-SPHD

Elite Line Posterior Adjustable Stop Component

- Compatible with all ankle joint components
- Incrementally adjustable to 25°
- Vacuum molded into plastic without use of fasteners
- Noise reduction bumper



Size	Product No.
Pediatric	PAS-100-P
Pediatric Mini	PAS-100-PM
Adult	PAS-100-A
Adult X-Large	PAS-100-AXL

Elite Line of Dorsi-Assist and Stop Component

- Compatible with all ankle joint components
- Mounted posterior midline
- Easily adjustable with 18° R.O.M
- Noise reduction bumper



Description/Size	Size	Product No.
Single Cable	Pediatric	DADS-100-P
Double Cable	Adult	DADS-200-A